



300 ans d'hydrographie

Shom operational regional ocean forecasting system

S. Louazel, S. Casitas, S. Corréard, Y. Ferret, V. Quilfen, G. Voineson

9th EuroGOOS Conference 3-5 May 2021

Why a regional oceanographic forecasting system ?

Shom must provide the **Ministry of Armed Forces** with 3D oceanographic forecasts.

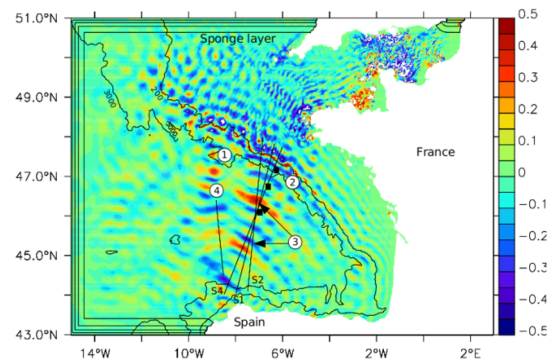
- **CMEMS** forecasts are used for **global** needs,
- **Shom** develops its own **regional** models over the French Navy areas of interest.

The goal is also to meet the maritime **civil stakeholders'** requirements.

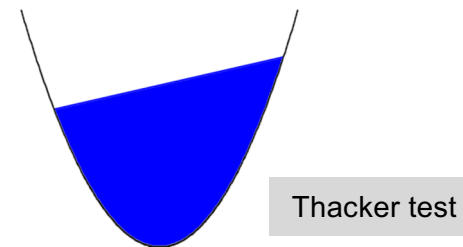
Shom HYCOM code

Operational regional models are based on the **HYCOM** community code optimized by Shom for :

- **Tidal modeling** : barotropic and internal tide, wetting and drying



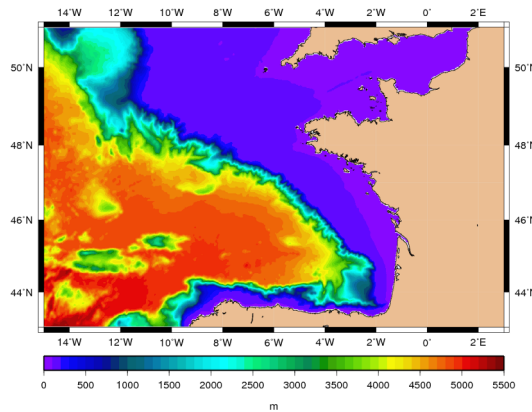
North-South baroclinic current component (m/s)



- **Mesh refinement** (not operational yet) : nested grids / curvilinear grids
- **Wave coupling** (not used in 3D operational models) with Wavewatch III ® code via OASIS coupler

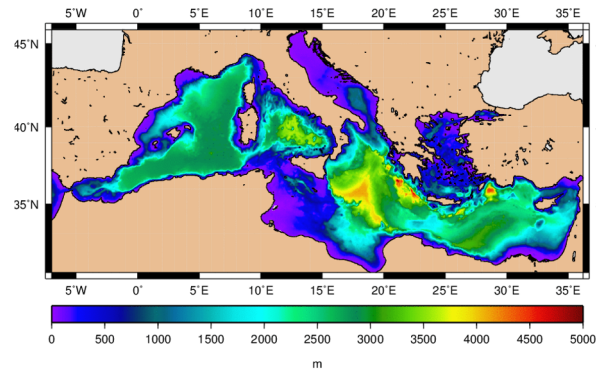
Operational models

Bay of Biscay model ~1.8 km , 40 layers



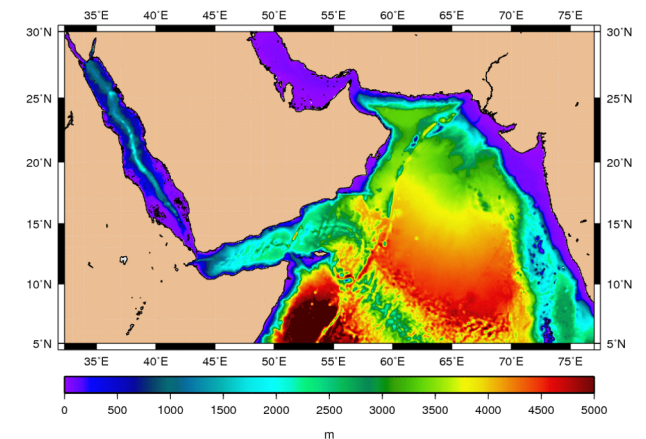
- Thermal fronts,
- Tide and internal tide,
- Eddies dynamics,
- Slope currents,
- River plumes, ...

Mediterranean model ~1.8 km , 32 layers



- Mediterranean northern current,
- Deep convection,
- Eddies dynamics,
- River plumes, ...

North-western Indian model ~5 km , 40 layers



- Eddies dynamics,
- Density currents, ...

The system is run daily from D-1 to D+5.

Real time defence products

French Navy requirements are driven by different missions

- Deterrence,
- Task force projection,
- Unit projection,
- Intelligence and sea policy regulation.



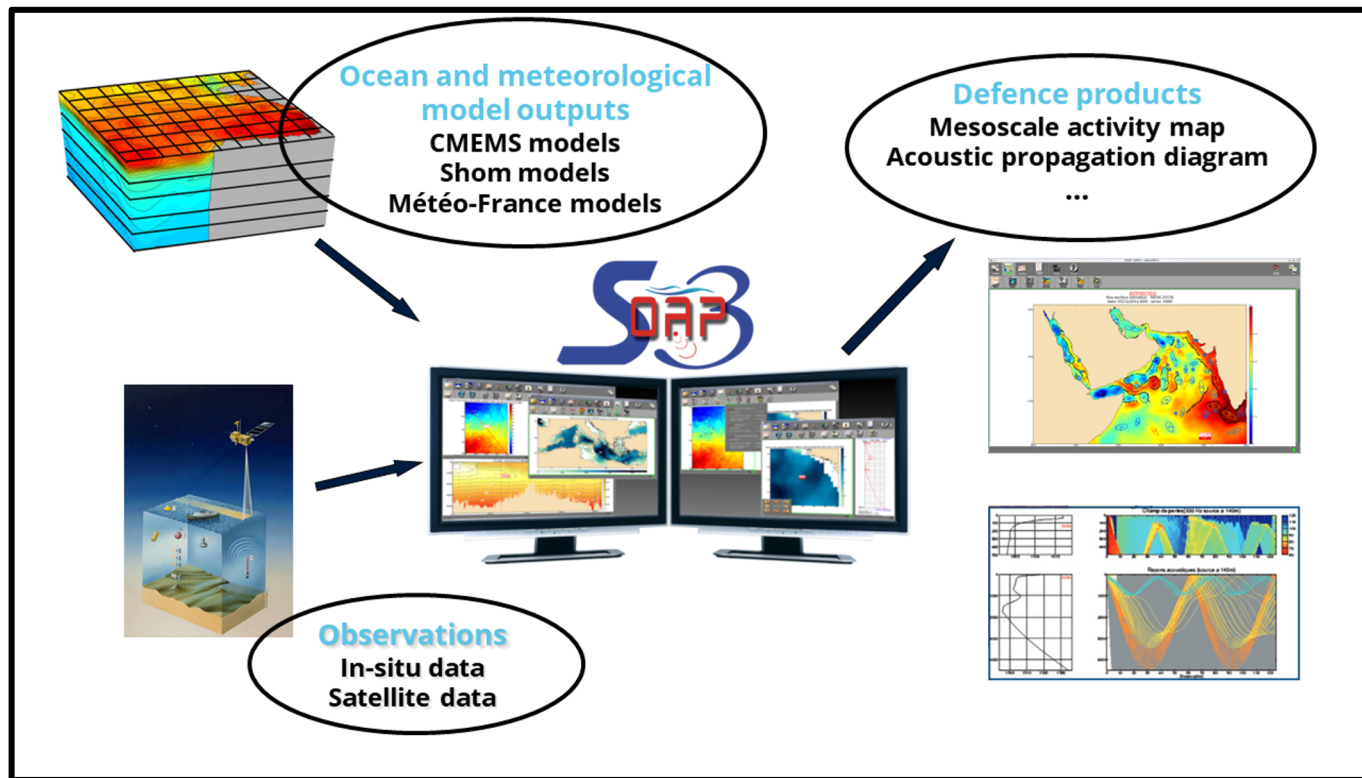
related to different warfare domain

- Anti-submarine warfare,
- Amphibious warfare,
- Mine warfare.



Real time defence products

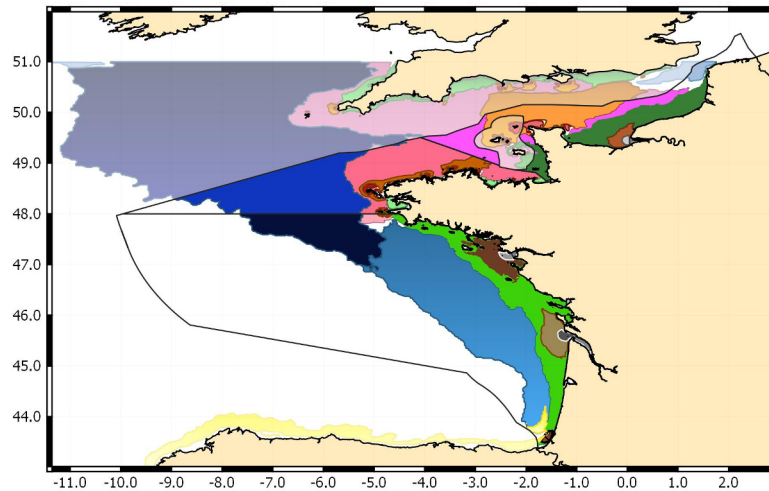
Operational Oceanographic Forecasting and Analysis System (SOAP)



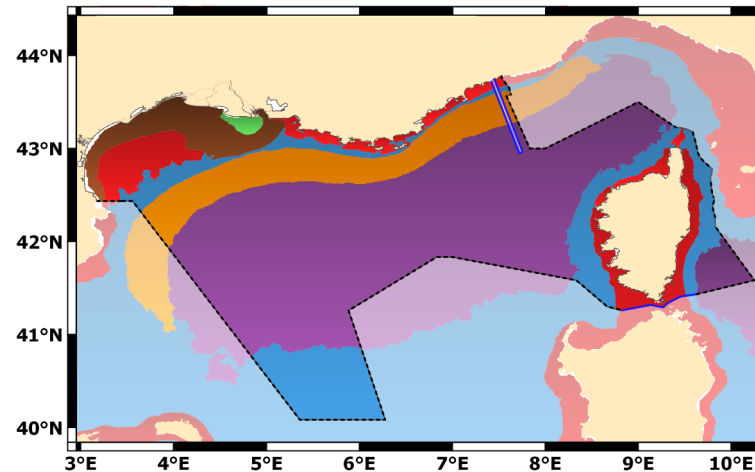
- Raw products,
 - current, temperature, salinity maps
 - profiles
- Derived products
 - mixed layer depth
 - minimum celerity depth
 - geometric acoustical products
- Analyzed products
 - mesoscale activity map
 - thermal front analysis
 - oceanic and acoustic reports

Specific civil uses – examples of government policy support

- **MSFD framework** : regional models outputs are used in order to generate the French Exclusive Economic Zone's seascapes.



Tew-Kai et al. 2020, J. Mar. Sci. Eng

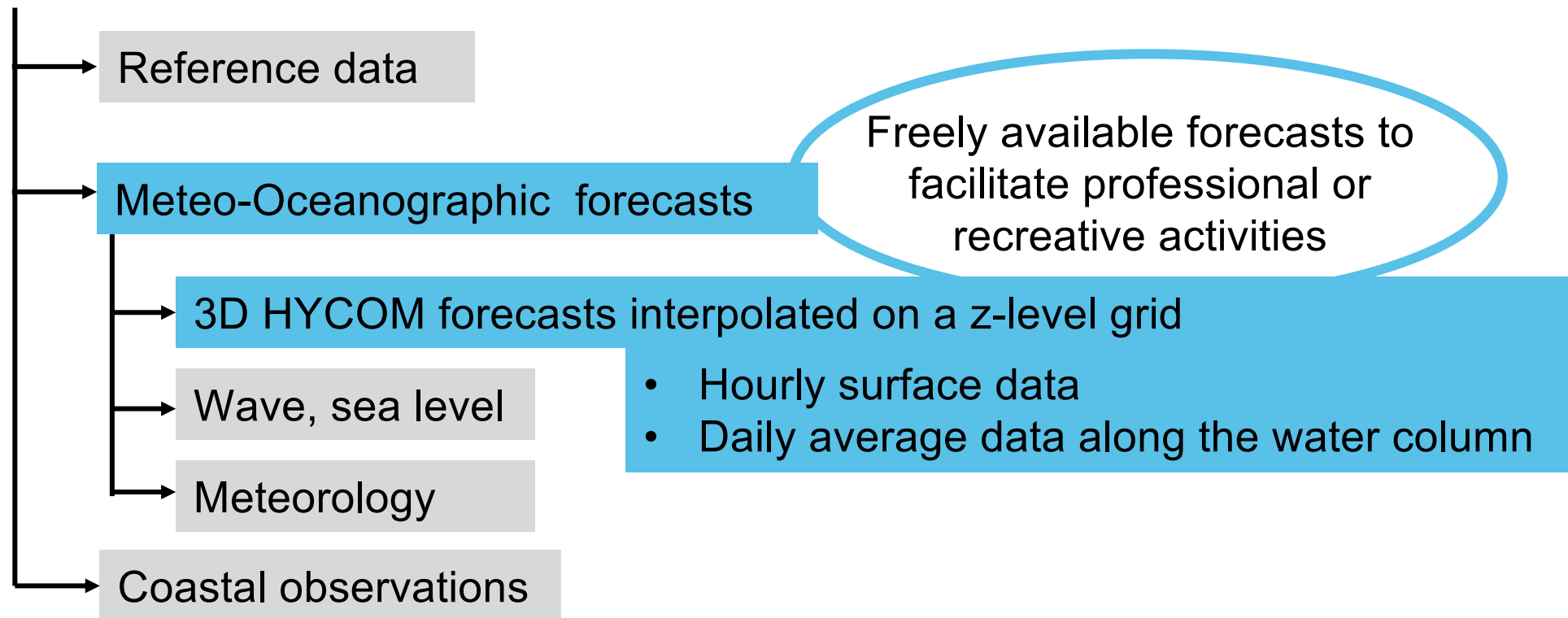


Quilfen et al. 2021, EuroGOOS Conference

- **Drift studies and projects** : collaboration with Météo-France, IRSN (French public expert in nuclear and radiological risks), Cedre (expert in accidental water pollution), the French maritime authorities...

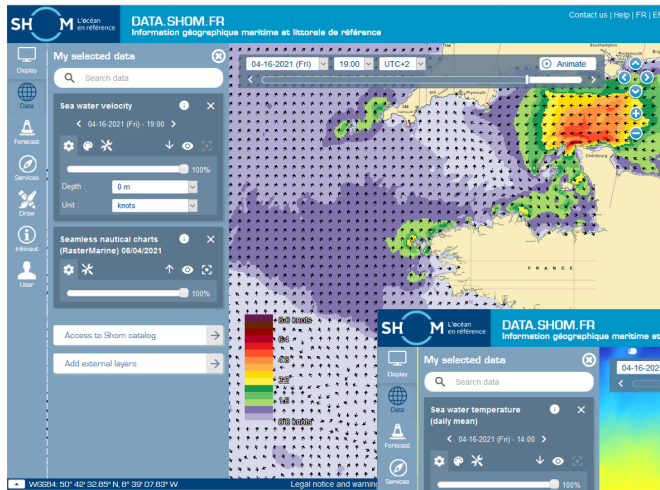
Civil uses – data.shom.fr web portal

DATA.SHOM.FR provides access to Shom data and in particular to Shom 3D oceanographic forecasts along the French coasts.

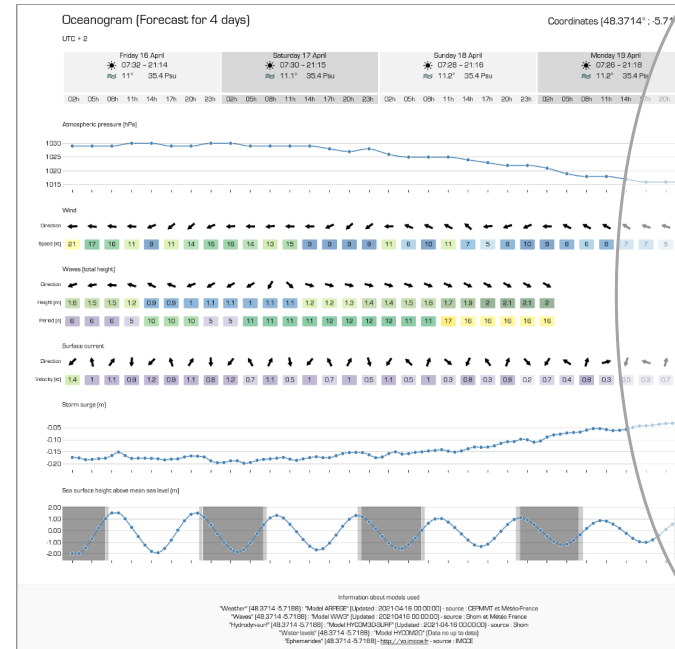
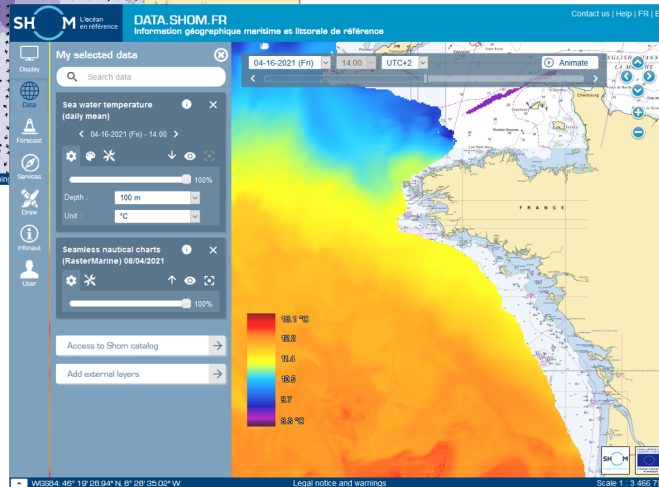


Civil uses – data.shom.fr web portal

2 ways of visualizing 3D oceanographic forecasts



Forecasts maps



- Sea surface temperature & salinity
- Atm pressure
- Wind
- Waves
- Surface current
- Storm surge
- Sea surface height

Oceanogram with all the available forecasts at the point of interest

+ manual or automatic download of NetCDF files since 2016

Civil uses – data.shom.fr web portal

For more information :

- data.support@shom.fr
- **Youtube Shom tutorials**

Analysing oceanographic forecasts

<https://www.youtube.com/watch?v=rpTCmz2cf0E>

Generating oceanograms

https://www.youtube.com/watch?v=h_83AQKSiX8

Downloading forecast files

<https://www.youtube.com/watch?v=NCZJV/sKF-6s>

